

# FLORIDA BUILDING CODE ACCESSIBILITY PARKING

6<sup>th</sup> Florida Building Code, Accessibility (FBCA)

302.1 Floor and ground surfaces shall be stable, firm, and slip resistant.

502.2 Each parking space must be at least 12 feet wide, shall be marked to define the width, and shall have an adjacent access aisle complying with 502.3.

502.3 Access aisles shall adjoin an accessible route. Two parking spaces shall be permitted to share a common access aisle. Parking access aisles must be part of an accessible route to the building or facility entrance. Access aisles must be placed adjacent to accessible parking spaces.

502.3.1 Access aisles serving car and van parking spaces shall be 60 inches wide minimum.

502.3.2 Access aisles shall extend the full length of the parking spaces they serve.

502.3.3 The access aisle must be striped diagonally to designate it as a no-parking zone.

502.3.4 Access aisles shall not overlap the vehicular way. Access aisles shall be permitted to be placed on either side of the parking space except for angled van parking spaces which shall have access aisles located on the passenger side of the parking spaces.

502.4 Access aisles shall be at the same level as the parking spaces they serve. Changes in level are not permitted.

EXCEPTION: Slopes not steeper than 1:48 shall be permitted.

406.2 Counter slopes of adjoining gutters and road surfaces immediately adjacent to the curb ramp shall not be steeper than 1:20. The adjacent surfaces at transitions at curb ramps to walks, gutters, and streets shall be at the same level.

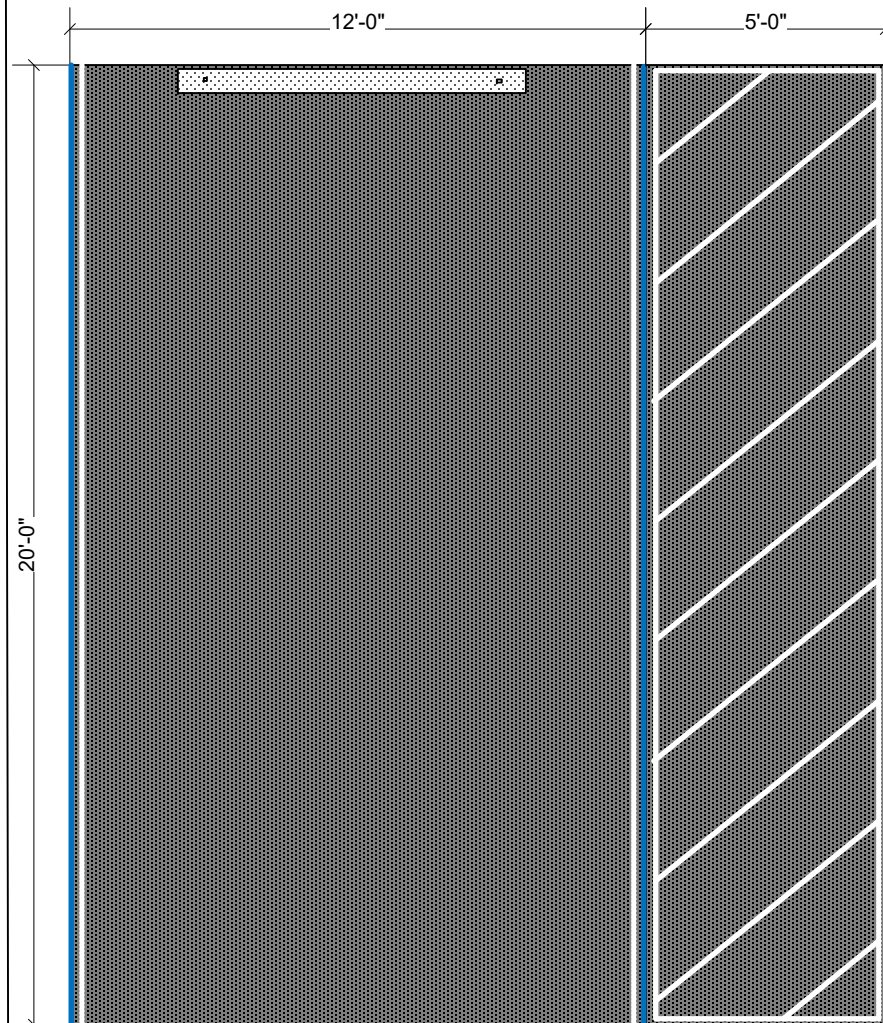
406.2 Counter slopes of adjoining gutters and road surfaces immediately adjacent to the curb ramp shall not be steeper than 1:20. The adjacent surfaces at transitions at curb ramps to walks, gutters, and streets shall be at the same level.

406.3 Where provided, curb ramp flares shall not be steeper than 1:10.

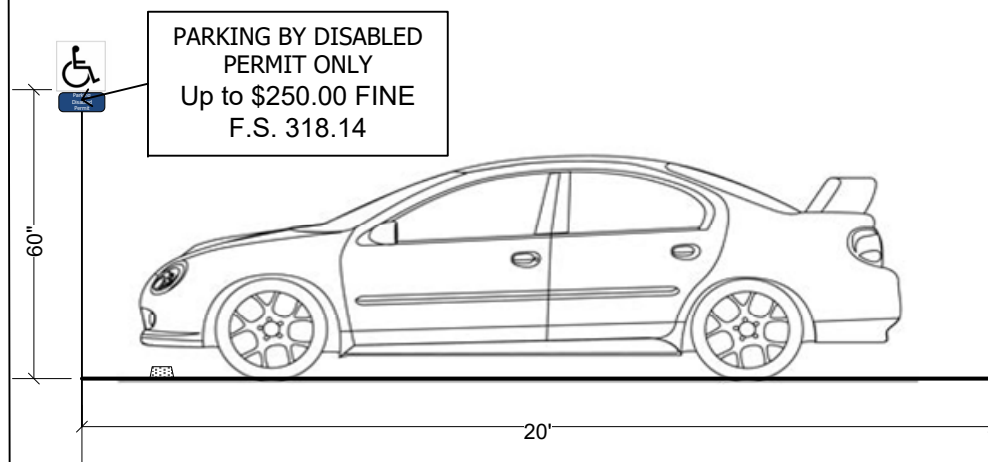
406.4 Landings shall be provided at the tops of curb ramps. The landing clear length shall be 36 inches minimum. The landing clear width shall be at least as wide as the curb ramp, excluding flared sides, leading to the landing.

EXCEPTION: In alterations, where there is no landing at the top of curb ramps, curb ramp flares shall be provided and shall not be steeper than 1:12.

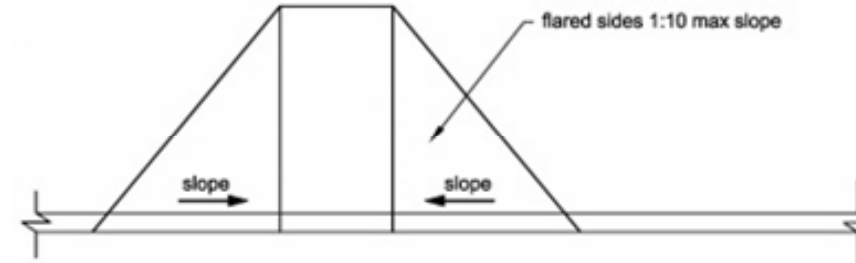
406.5 Curb ramps and the flared sides of curb ramps shall be located so that they do not project into vehicular traffic lanes, parking spaces, or parking access aisles. Curb ramps at marked crossings shall be wholly contained within the markings, excluding any flared sides.



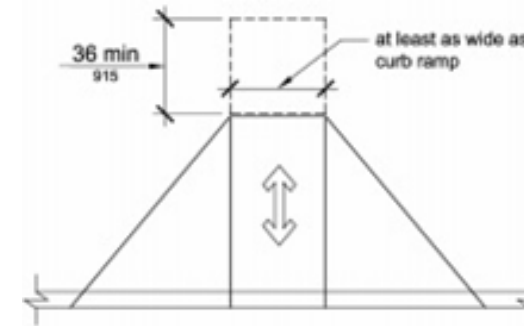
Accessible Parking Top Down View



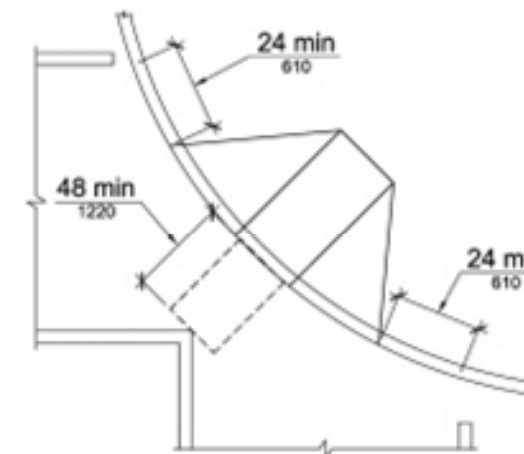
Accessible Parking Side View



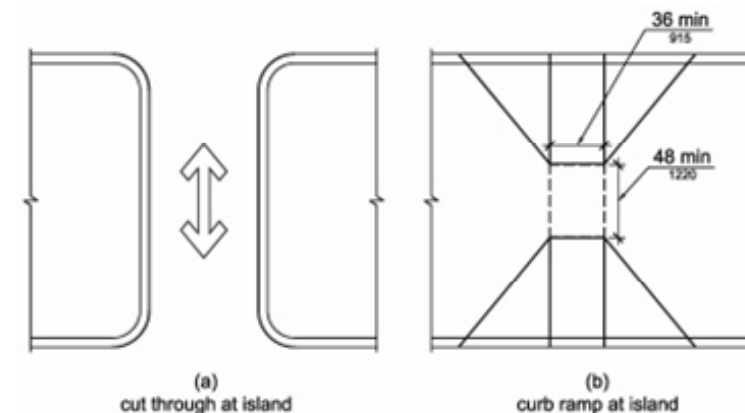
Sides of Curb Ramps



Landings at Top of Curb Ramps



Diagonal or Corner Type Curb Ramps



Accessible Islands in Crossings

406.6 Diagonal or corner type curb ramps with returned curbs or other well-defined edges shall have the edges parallel to the direction of pedestrian flow. The bottom of diagonal curb ramps shall have a clear space 48 inches minimum outside active traffic lanes of the roadway. Diagonal curb ramps provided at marked crossings shall provide the 48 inches minimum clear space within the markings. Diagonal curb ramps with flared sides shall have a segment of curb 24 inches long minimum located on each side of the curb ramp and within the marked crossing.

406.7 Raised islands in crossings shall be cut through level with the street or have curb ramps at both sides. Each curb ramp shall have a level area 48 inches long minimum by 36 inches wide minimum at the top of the curb ramp in the part of the island intersected by the crossings. Each 48 inch minimum by 36 inch minimum area shall be oriented so that the 48 inch minimum length is in the direction of the running slope of the curb ramp it serves. The 48 inch minimum by 36 inch minimum areas and the accessible route shall be permitted to overlap.

502.6 Parking space identification signs shall include the International Symbol of Accessibility complying with 703.7.2.1. Signs identifying van parking spaces when required by 502.2 shall contain the designation "van accessible."

502.6.1 Each such parking space must be striped in a manner that is consistent with the standards of the controlling jurisdiction for other spaces and prominently outlined with blue paint, and must be repainted when necessary, to be clearly distinguishable as a parking space designated for persons who have disabilities. The space must be posted with a permanent above-grade sign of a color and design approved by the Department of Transportation, which is placed on or at least 60 inches above the finished floor or ground surface measured to the bottom of the sign and which bears the international symbol of accessibility and the caption "PARKING BY DISABLED PERMIT ONLY." Such a sign, erected after October 1, 1996, must indicate the penalty for illegal use of the space.

703.7.2.1 The International Symbol of Accessibility shall comply with Figure 703.7.2.1.

